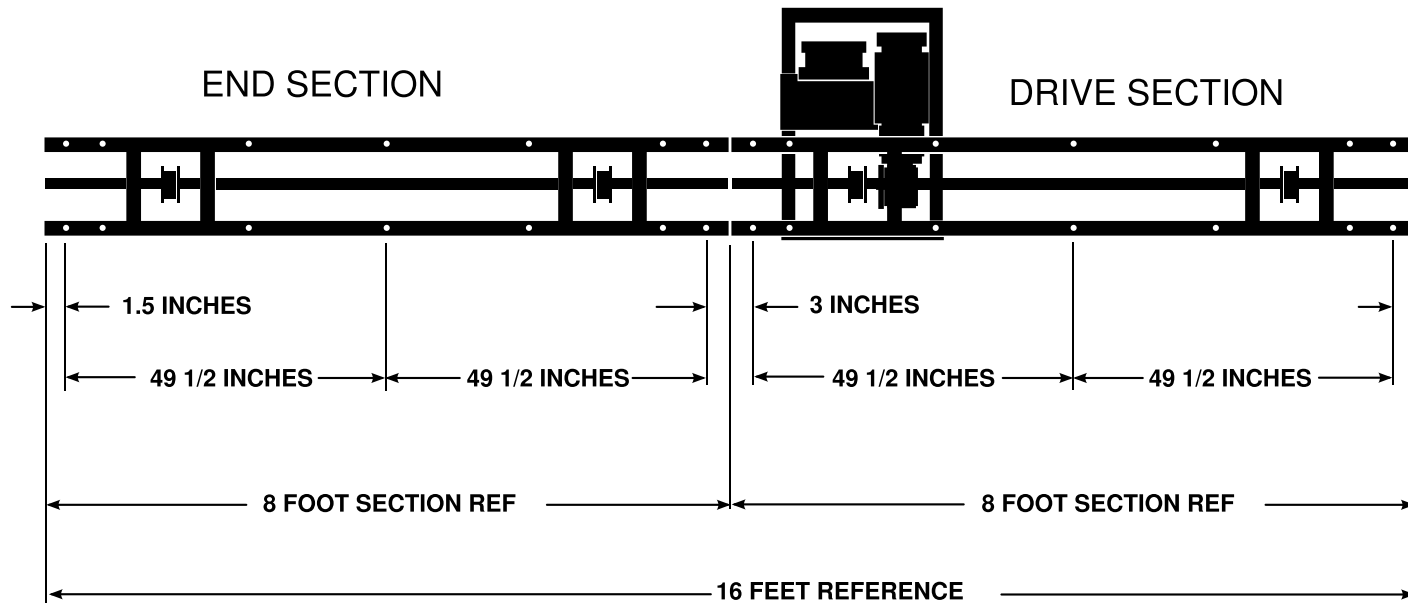


REV:	DESCRIPTION:	DATE:	OK BY:
A	RELEASED	MAY 09, 2013	ART K.
B	REVISED NOTES	NOV 30, 2017	JAKE E.



**NOTES:**

1. WEIGHT OF EMPTY MACHINE IS 380 POUNDS
2. LIFTING CAPACITY IS 1,600 POUNDS
3. 1/2HP MOTOR 208V 3.7A

**ELECTRICAL REQUIREMENTS:**

1. SIZE 10 AWG WIRE
2. TWO 120V, ONE NEUTRAL, ONE GROUND
3. NEMA L14-20R RECEPTACLE
4. 20 AMP BREAKER REQUIRED FOR EACH MACHINE

TITLE: CUT SHEET AND MOUNTING POINTS, 16 FOOT MACHINE TWO 8 FOOT LONG SECTIONS	
DWG NO: P-2026	REV: B